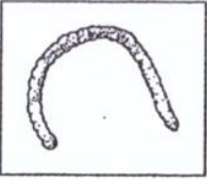
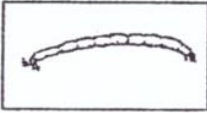




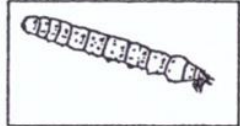
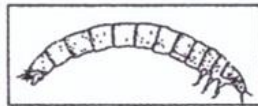


HEALTH CARDS

<p>Did you find only these aquatic invertebrate organisms?</p> <p>The health condition of the ecosystem is bad.</p>	<div data-bbox="603 331 810 510">  </div> <p>Water worm How many?</p> <div data-bbox="614 544 821 656">  </div> <p>Red gnat larva How many?</p>
<p>In addition to the previous organisms, did you also find those that are in the frames?</p> <p>The health condition of the ecosystem is low.</p>	<div data-bbox="598 846 1029 974">  </div> <div data-bbox="598 1108 805 1198">  </div> <p>Leech How many?</p> <div data-bbox="1013 1030 1189 1198">  </div> <p>Bivalvia How many?</p> <div data-bbox="598 1299 758 1512">  </div> <p>Isopoda How many?</p> <div data-bbox="933 1388 1173 1512">  </div> <p>Fly larva How many?</p>

In addition to the previous organisms, did you also find those that are in the frames?

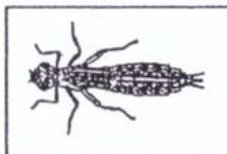
The health condition of the ecosystem is moderate.



Beetle larva
How many?



Zygoptera pupa
How many?



Anisoptera pupa
How many?



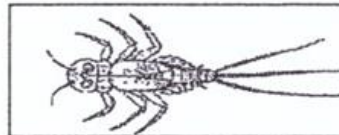
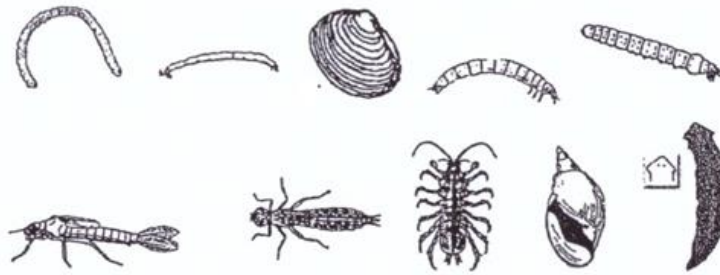
Snail
How many?



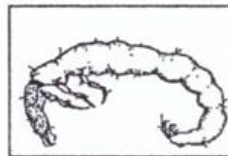
Platyhelminthes
How many?

In addition to the previous organisms, did you also find those that are in the frames?

The health condition of the ecosystem is good.



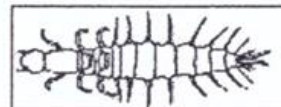
Ephemeroptera pupa
How many?



Trichoptera larva
How many?



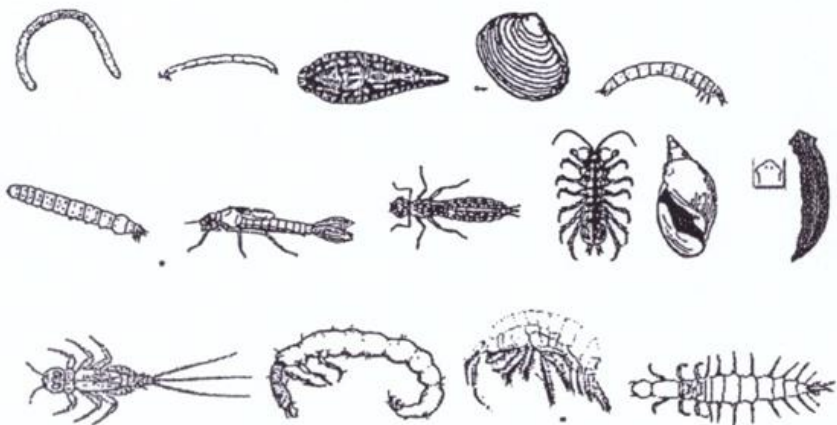
Amphipoda
How many?



Megaloptera larva
How many?

In addition to the previous organisms, did you also find those that are in the frames?

The health condition of the ecosystem is high.



Plecoptera pupa
How many?