

# THE DOUBTFUL GUEST\*

## ACTIVITY BOOKLET



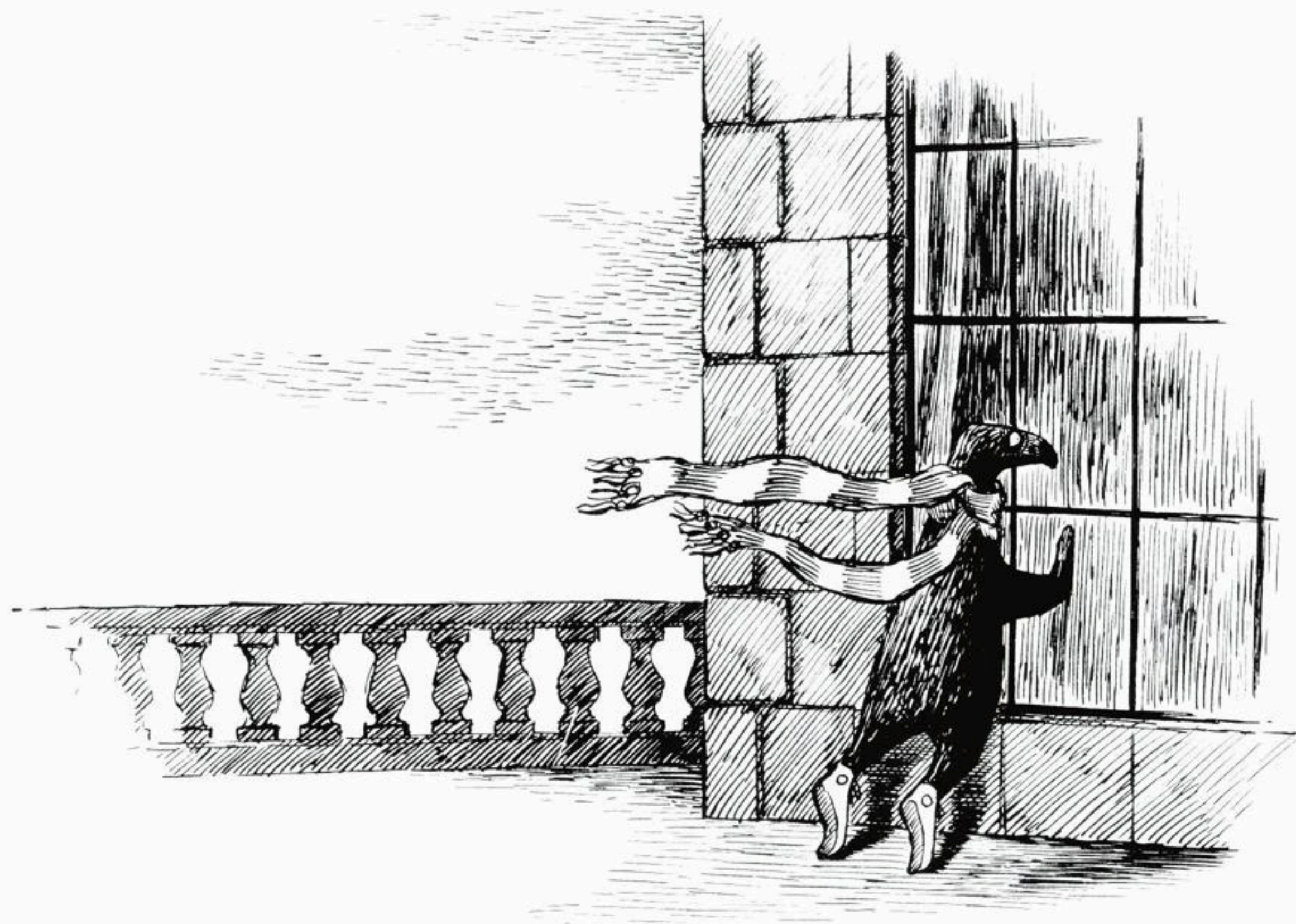
\*WHO IS DEFINITELY NOT A PENGUIN

I AM  
NOT

A PENGUIN!

SAID BY THE GUEST, MOST LIKELY





# WHEN THE GUEST RANG THE DOOR BELL...

A)  
THE FAMILY  
DIDN'T  
EXPECT  
ANYBODY

B)  
THE FAMILY  
WAS NOT  
EXPECTING  
ANYBODY

C)  
THE FAMILY  
WAS NOT  
EXPECTED  
ANYBODY



WHEN THEY ANSWERED THE BELL THAT NIGHT...

A)

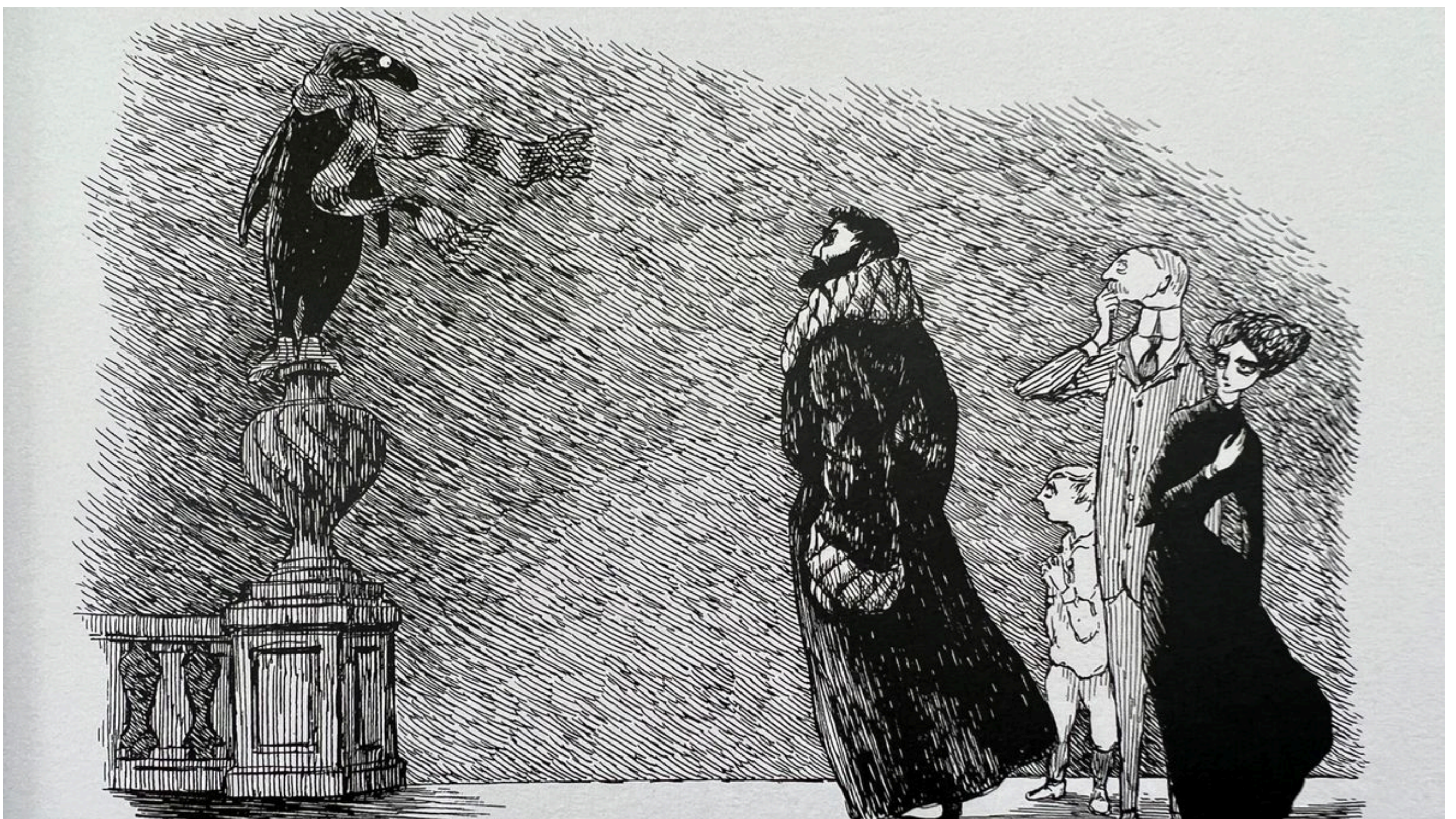
THE GUEST WAS  
STANDING ON TOP  
OF A VASE

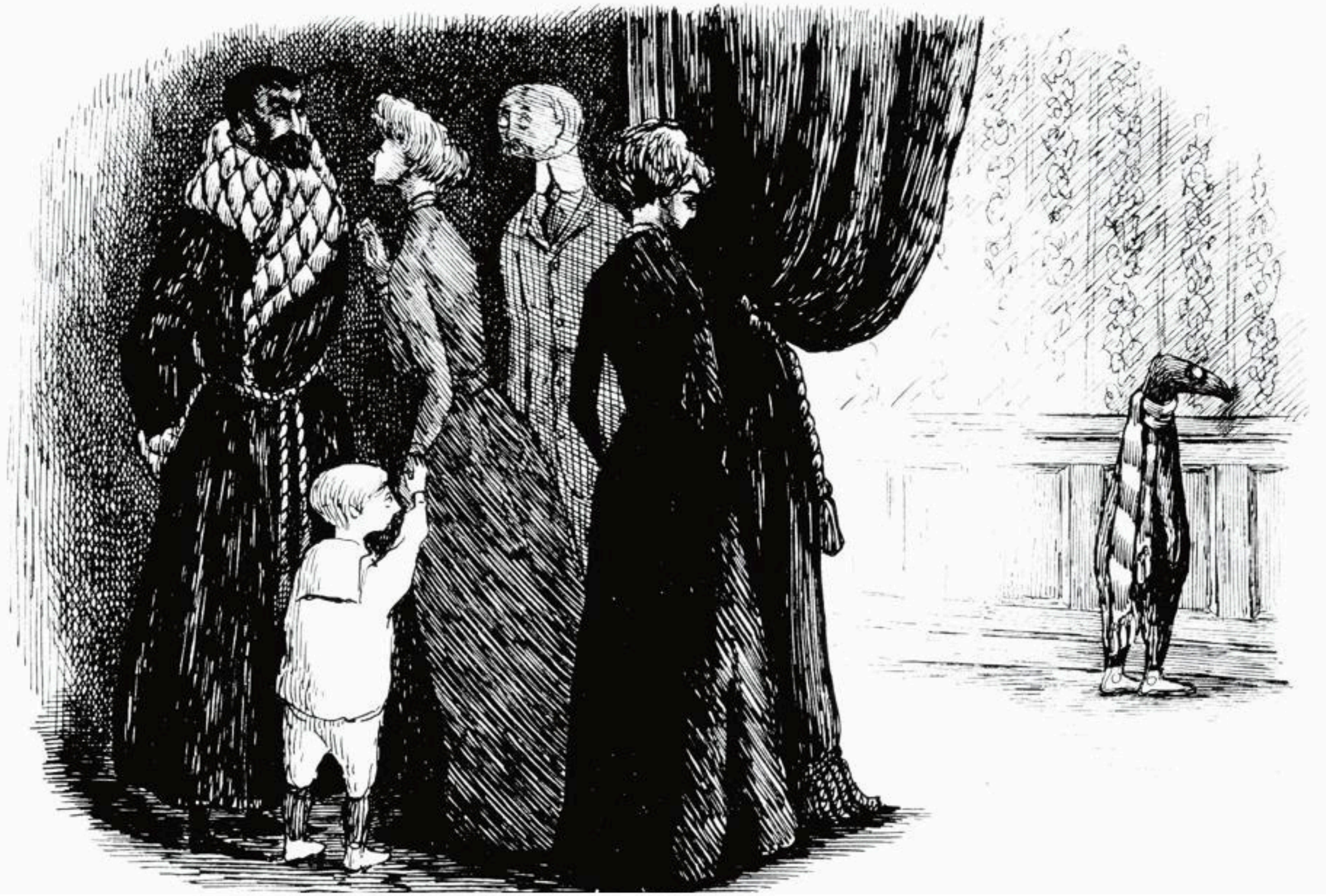
B)

THE GUEST WAS  
STAND ON TOP OF  
A VASE

C)

THE GUEST IS  
STANDING ON  
TOP OF A VASE





IT WAS RUNNING INSIDE THE HOUSE  
WHEN SUDDENLY....

A)

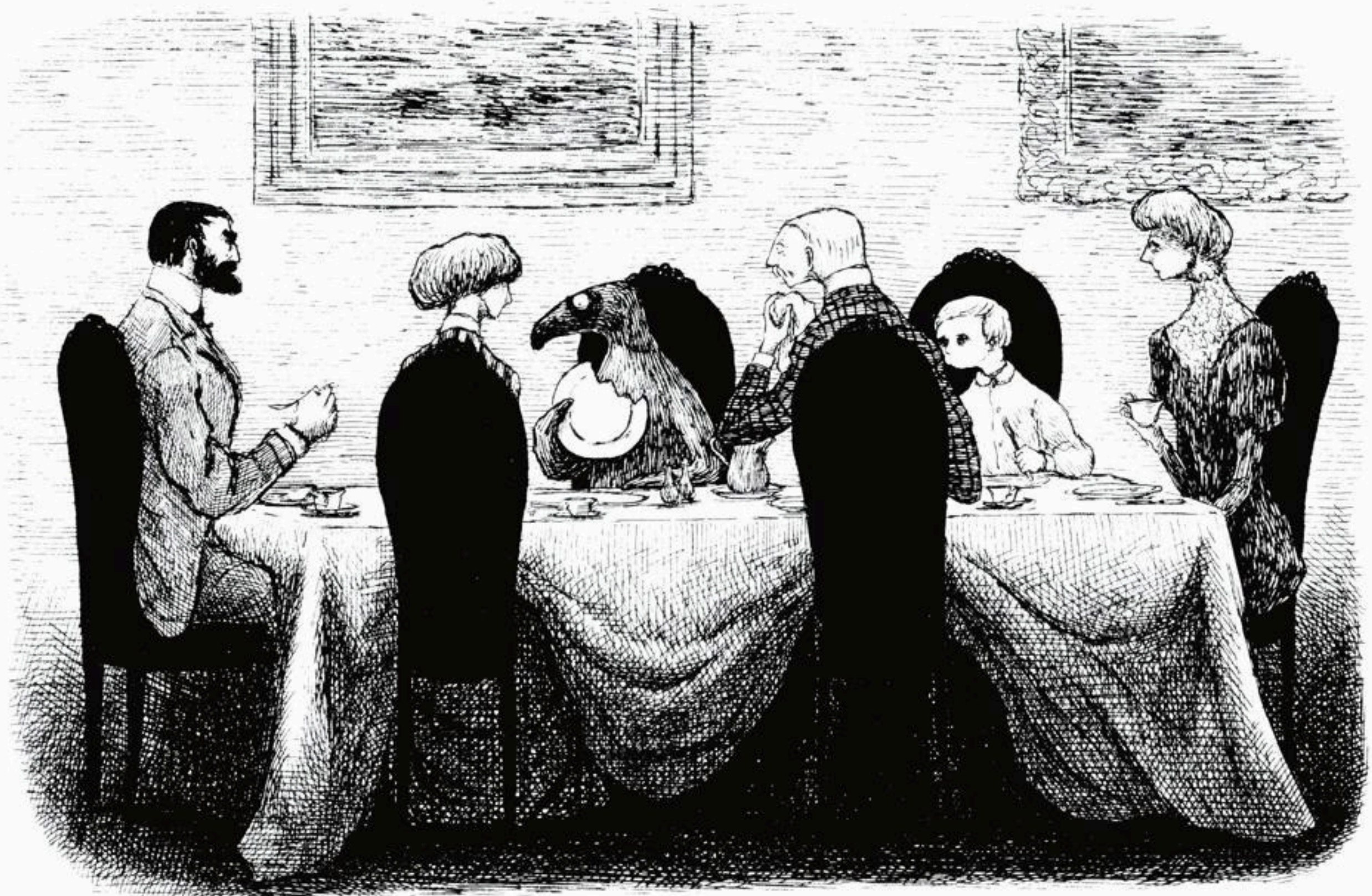
IT PUT ITS  
NOSE TO  
THE WALL

B)

IT WAS PUTTING  
ITS NOSE TO  
THE WALL

C)

IT PUTED ITS  
NOSE TO THE  
WALL



**WHILE THE FAMILY WAS EATING BREAKFAST....**

**A)**

**THE GUEST WAS  
EATING ALL THE  
SYRUP, TOAST,  
AND PART OF A  
PLATE**

**B)**

**THE GUEST  
EATED ALL THE  
SYRUP, TOAST,  
AND PART OF A  
PLATE**

**C)**

**THE GUEST ATE  
ALL THE SYRUP,  
TOAST, AND  
PART OF A PLATE**

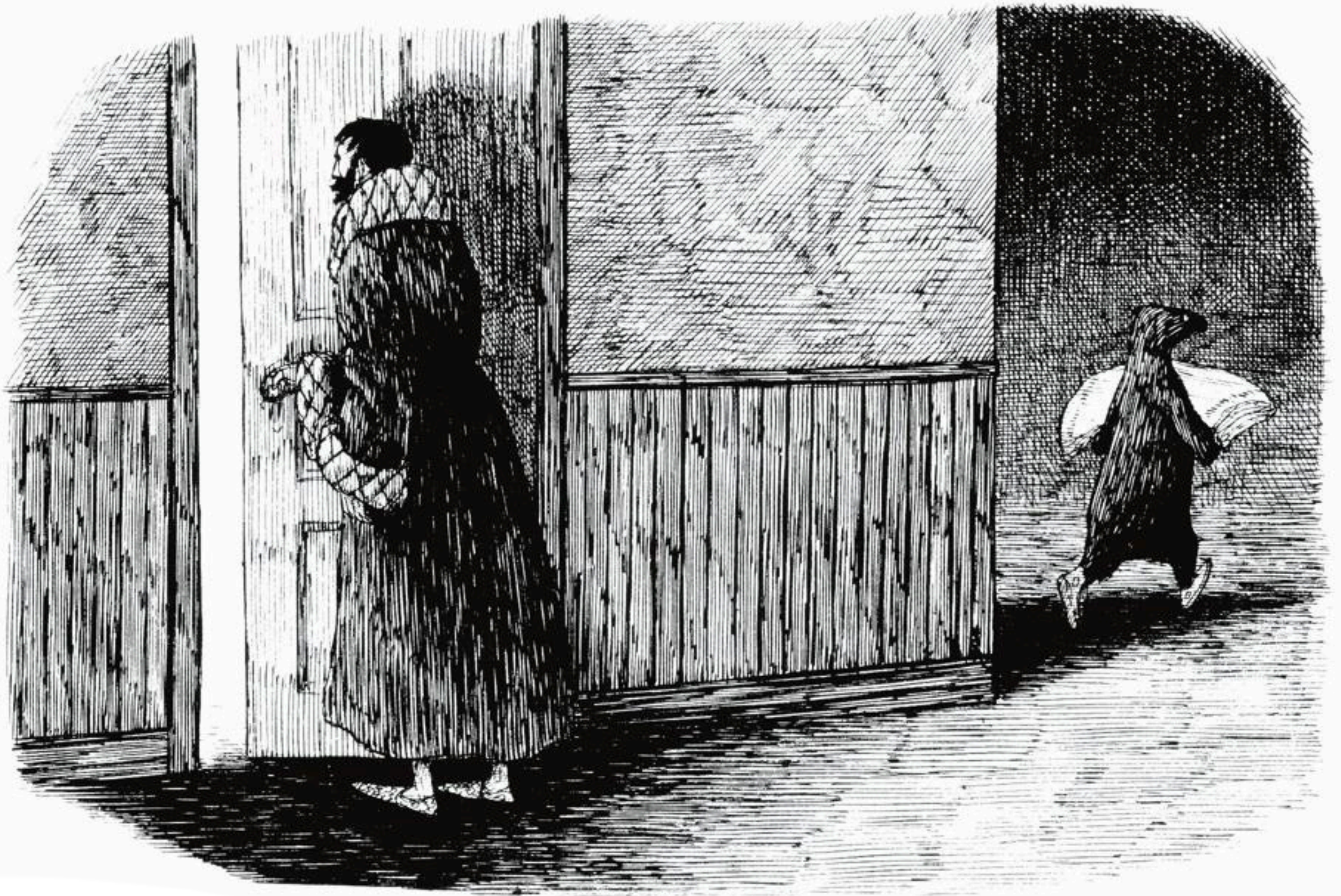


**WHEN THE FAMILY SAW IT AFTER BREAKFAST...**

**A)  
IT CUT OFF  
THE HORN OF  
THE  
GRAMOPHONE**

**B)  
IT WAS  
CUTTING OFF  
THE HORN OF  
THE  
GRAMOPHONE**

**C)  
IT CUTED OFF  
THE HORN OF  
THE  
GRAMOPHONE**



**WHEN THE TOWELS VANISHED FROM THE BATH, IT  
WAS BECAUSE...**

**A)**

**IT IS HAVING  
AN EPISODE OF  
BEWILDERING  
WRATH**

**B)**

**IT HAD AN  
EPISODE OF  
BEWILDERING  
WRATH**

**C)**

**IT WAS HAVING  
AN EPISODE OF  
BEWILDERING  
WRATH**



ONE DAY, THE FAMILY FOUND IT WHILE IT WAS  
HEADING TO THE POND, BECAUSE ....

A)

IT FOUND AN  
OBJECT THAT  
IT LOVED

B)

IT WAS FINDING AN  
OBJECT THAT IT  
LOVED

C)

IT FINDED AN  
OBJECT THAT  
IT LOVED