





SILHOUETTE VILLAGE



OVERVIEW

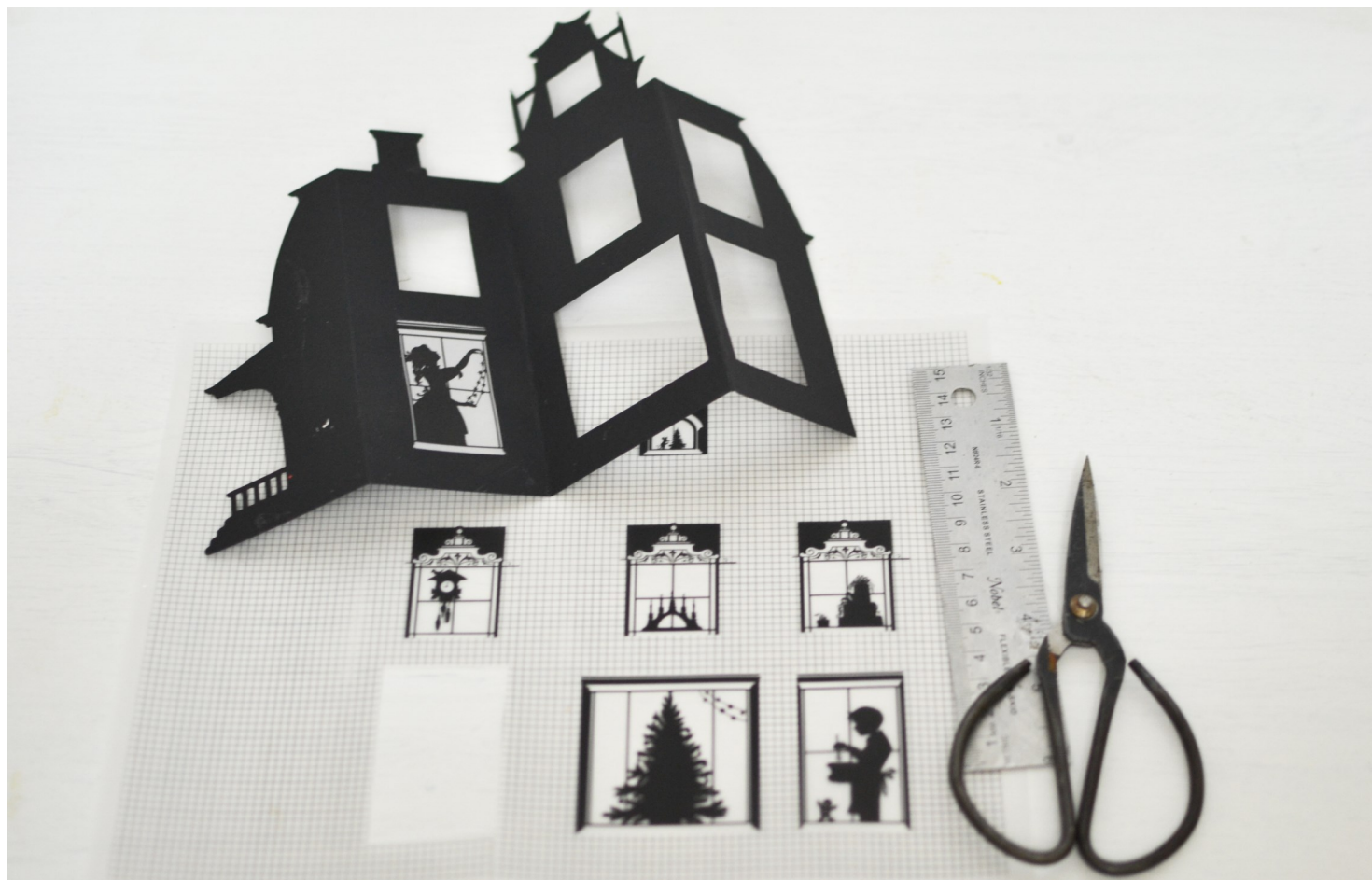
SKILL: papercutting

MATERIALS: paper, printable vellum paper, scissors, hobby knife, glue stick, LED lights

TIME: >1 hour

Build a silhouette Christmas village on your mantle! The joyous busyness of Christmas preparations is seen in every window of this little village.

1. Print the house templates and cut them out. A hobby knife works well for cutting windows out.
2. Print the window templates on printable vellum paper. Cut them out.
3. Fold the house templates to make them stand.





SILHOUETTE VILLAGE

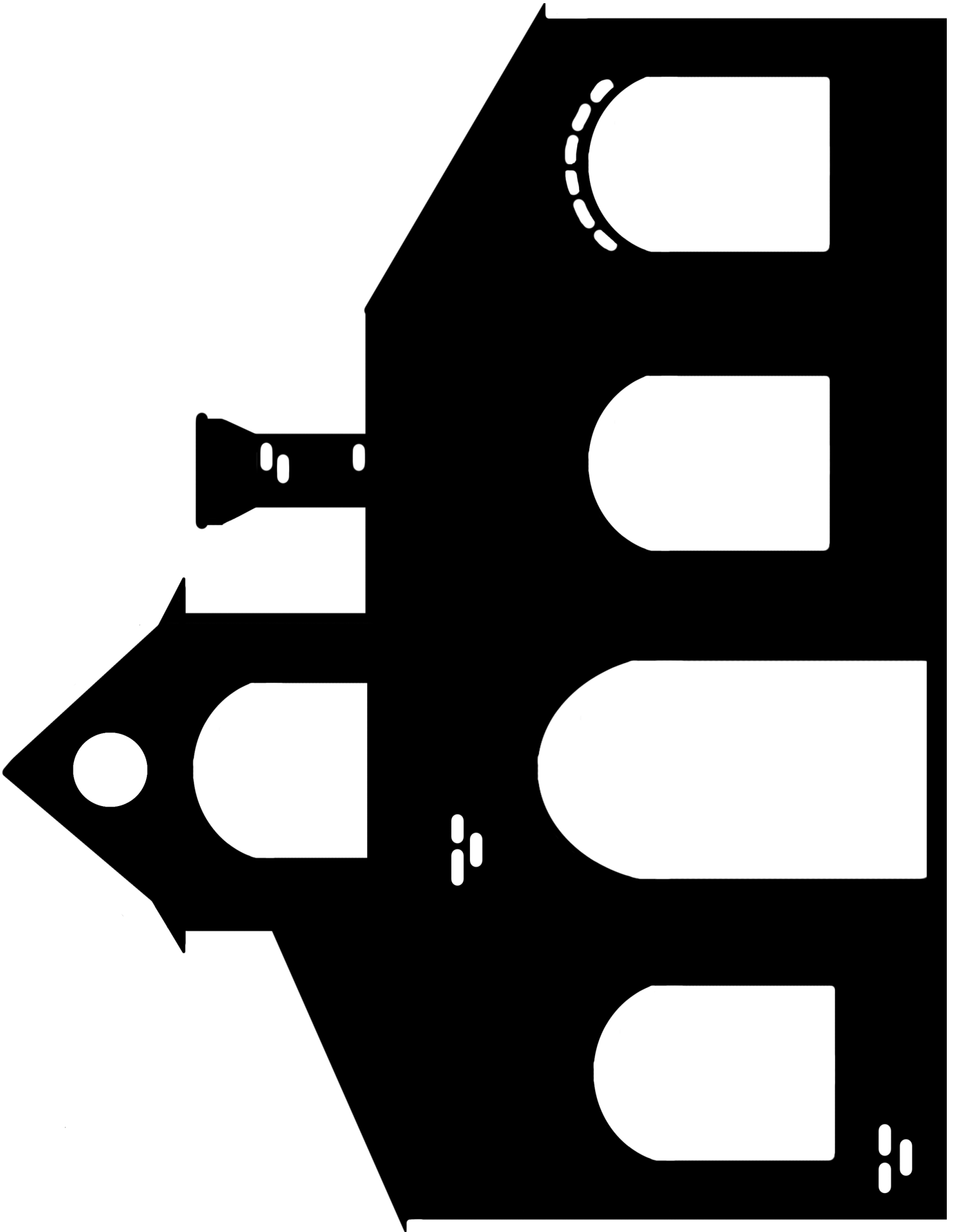


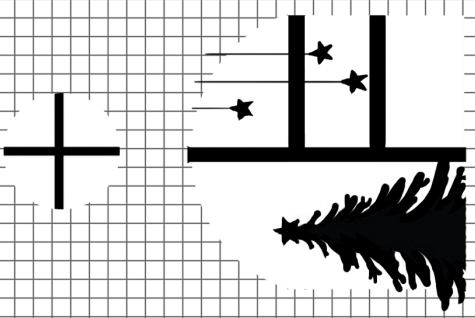
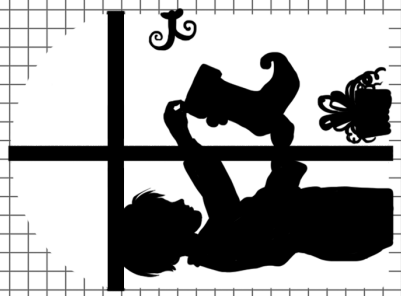
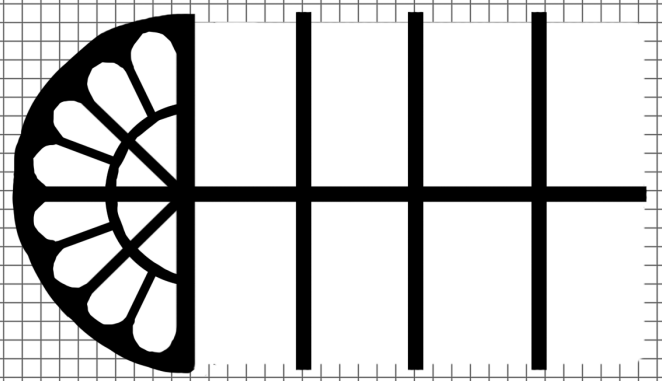
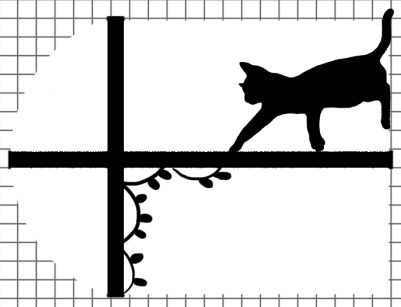
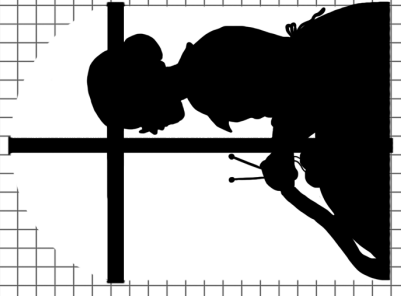
4. Glue the window templates to the openings in the houses. Use a glue stick or scotch tape for attaching them securely to the back side of the house silhouettes.

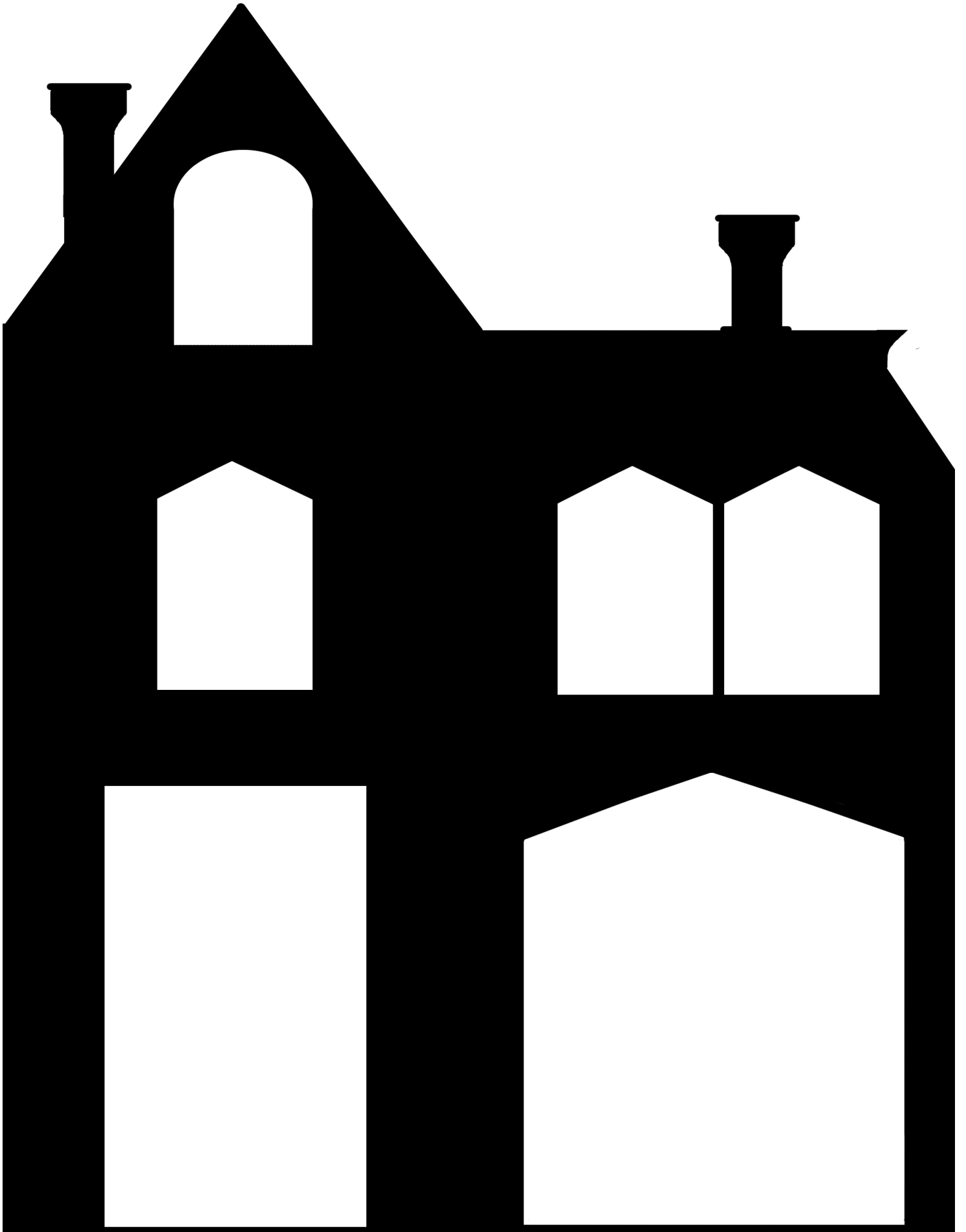


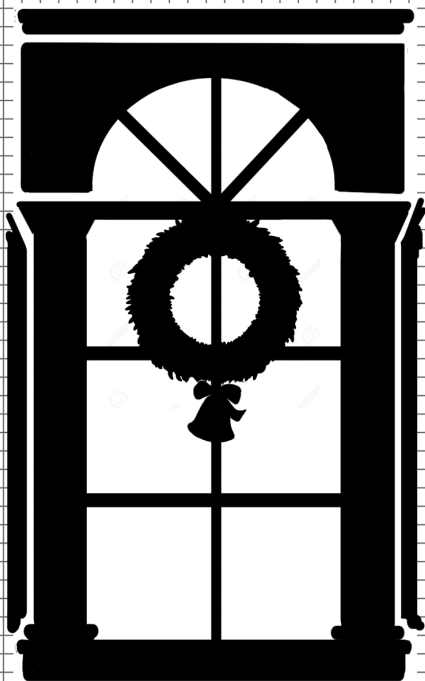
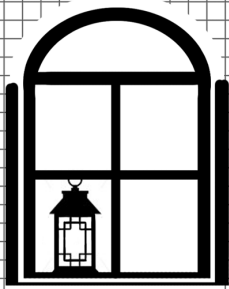
5. Display with LED tea lights or strings of lights behind.

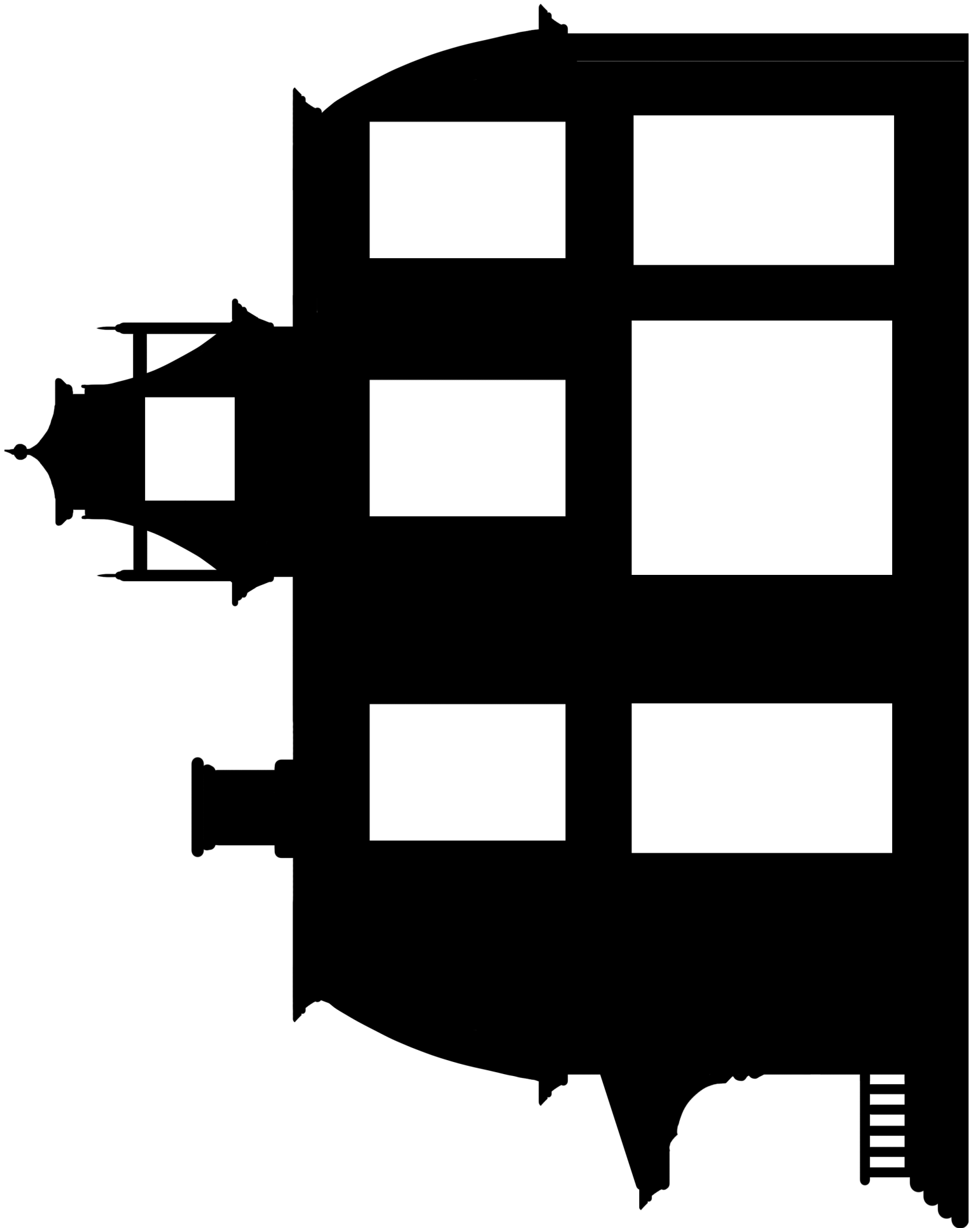
FOR YOUR OWN DESIGNS: You can draw your own window design with a black sharpie marker or ink pen. As vellum paper is made of plasticized cotton, the picture may get smudged if touched within the first minute, so be careful. It dries up quickly and doesn't smudge afterwards.

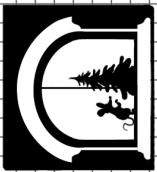
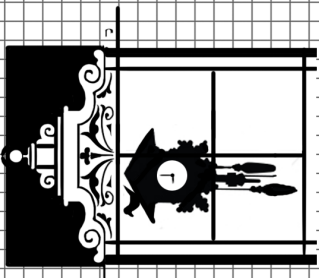
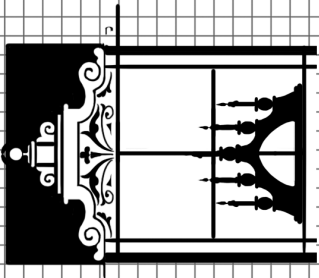
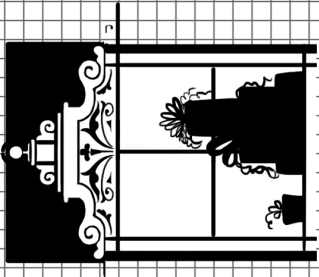
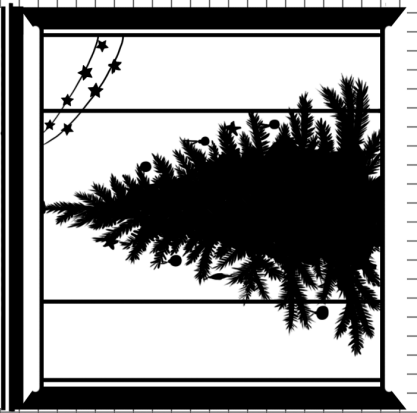
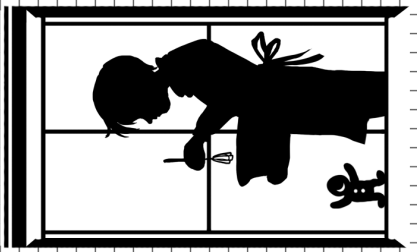














ti

